

GYM MAT

COMMERCIALLY CERTIFIED GYM FLOORING



These high-quality, Australian made, Commercially Certified Gym Flooring Mats come in a 1m x 1m size, boasting a thickness of 15mm and featuring bevelled edges along the perimeter.

The substantial weight of these tiles makes them ideal for easy loose-laid installations. This practical approach is especially beneficial for fitness center owners, allowing them to view the floor as a removable asset in case of relocation.

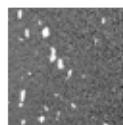
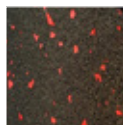
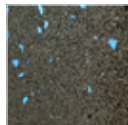
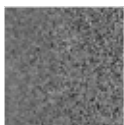
FEATURES & BENEFITS

- Available in 1m x 1m squares
- Reduces noise and vibration
- Superior fall protection and absorption
- Odourless rubber
- Easy to install
- Easily removable
- Made in Australia
- Domestic & Light Commercial Gym Mats also available

SPECIFICATIONS

Uses	Indoor / Outdoor undercover use
Materials	Polymerically bound recycled rubber
Thickness	15mm
Size	1000mm x 1000mm
Density	800kg/m ³
Edges	Bevelled
Tensile Strength	1.40 N/mm ²
Wet Pendulum	P5 (V) slip resistance
Dry Pendulum	D1 ≥ 0.40 (F) dry floor friction
Shore A Hardness	40
Fire Rating	CRF 3.1KW/m ² Mean
Smoke Value	100%
Edges	Bevelled

COLOURS



Black Black w/ Blue Flecks Black w/ Red Flecks Black w/ Light Grey Flecks



RECOMMENDED FOR

- Commercial Gymnasiums
- Fitness Clubs
- School Gyms
- Sporting Centres
- Undercover Terrace Flooring
- Undercover Balcony Flooring



WE LOVE MATS

1800 300 311 | info@thematgroup.com.au | matting.com.au

